

# **Brix Medical Science.**

Presentation of CLOSAX Dermal Line



**Argentina, November 2019**



**Rimal Egypt**

# E.B.E. Technology (Emulsión Buffer Encapsulante)

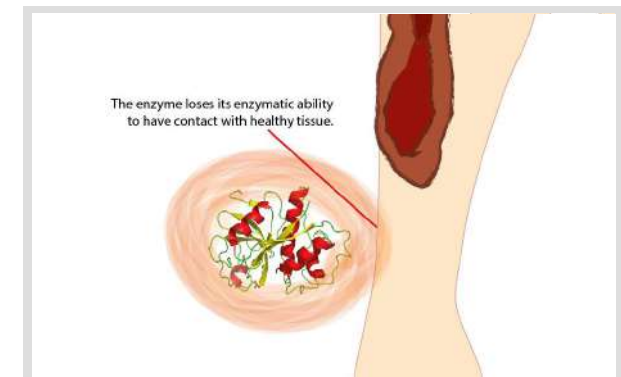
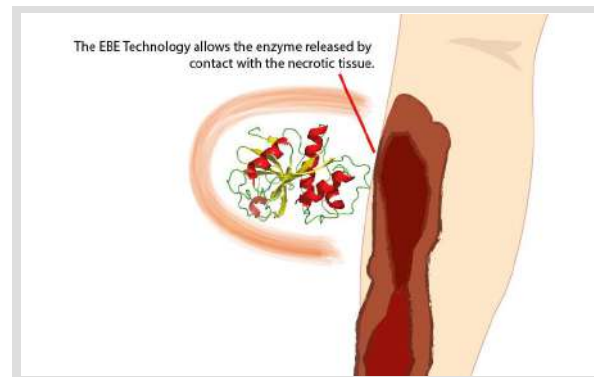
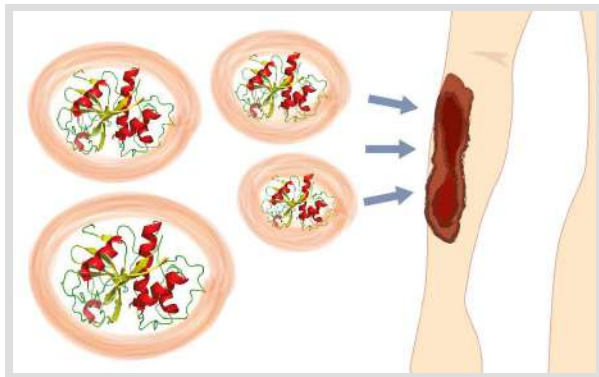


- This technology belongs to the field of a dermatological chemical composition, of manual application, whose objective is the atraumatic removal of tissue necrosis, without resorting to surgeries and without use or with a minimum use of instruments.
- Papain, an active component of some of our pharmaceutical products, is bioencapsulated with the innovative and exclusive E.B.E. Technology (Encapsulating Buffer Emulsion) that immobilizes and confers gel stability, which exponentially increases the enzymatic activity of the product with respect to the current state of the art. (Current state of the art is 600 to 1800 U / mg max in non-aqueous encapsulations that are irritating to the skin and other tissues).
- The E.B.E. Technology differs from other encapsulation technologies in that it is in aqueous medium, with safe excipients according to FDA, of zero irritability for tissues.

# E.B.E. Technology (Emulsión Buffer Encapsulante)



- The Technology E.B.E. allows our products to remove necrotic tissue and for scarring, act selectively. In this way, enzymatic capacity is lost by contact with healthy tissues. In addition, EBE Technology gives our products the optimum pH to immobilize the enzyme and release it at the time of exercising its proteolysis on collagen, increasing its activity above 60%.



# closax<sup>®</sup>



| Brix Medical Science.





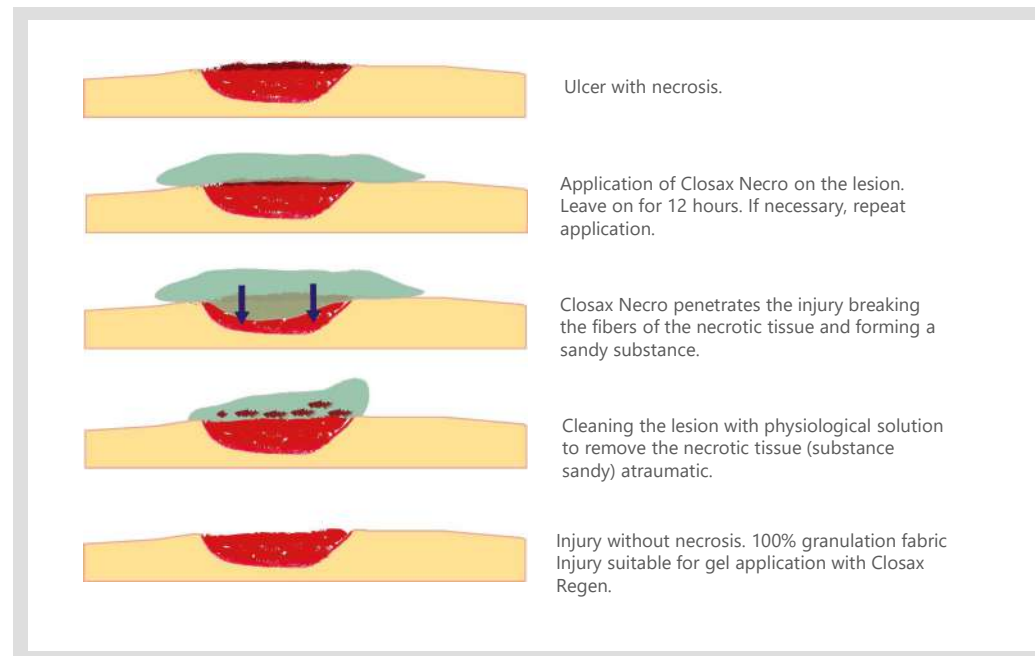
**closax**<sup>®</sup>  
**NECRO**



**Rimal Egypt**

## Description

- It is a medical device, presented in gel for topical use, indicated for the atraumatic removal (99% of cases) of necrotic tissue.
- It contains Papain (6,000 U / mg) as an active ingredient as a proteolytic enzyme (endoprotein) similar to human pepsin. With bactericide, bacteriostatic and anti-inflammatory properties.
- Contains lidocaine (2%) - local anesthetic -.



## Advantages

- Acts as a bactericide, anti-inflammatory and vasodilation agent.
- It does not need surgeries or instrumentals.
- Rapid recovery of the patient, the results can be seen after 12-24 hours after application, granulation tissue appears between 12-24 hs.
- Eliminates necrosis and without pain.
- Without systemic absorption.
- Without secondary action on healthy tissue.
- Easy application.



## Comparison with other treatments

- Closax Necro is better than other existing treatments, which present several disadvantages such as:

Surgery	Collagenase	Chloramphenicol
Traumatic	It damages healthy skin.	After prolonged use, it
Expensive	Extensive procedure.	produces bacterial resistance.
It needs preparation.	It requires a lot of attention.	Risk of aplastic anemia in 1 /
It needs more time.		100,000 patients.

Treatment in different types  
of injuriest



**closax**<sup>®</sup>  
NECRO



**Rimal Egypt**

Patient with 2nd degree burn due to fuel. 5 days of evolution.



Before



During the treatment  
(12 hs with Closax Necro)



After 24 hours  
(2 applications every 12 hours)

Necrotic lesion with 1 week of evolution. Previous treatment.



Before



12 hours of treatment

Lesion with 10 days of evolution. With previous treatment.



Before



After



**closax**<sup>®</sup>  
REGEN



**Rimal Egypt**

## Description

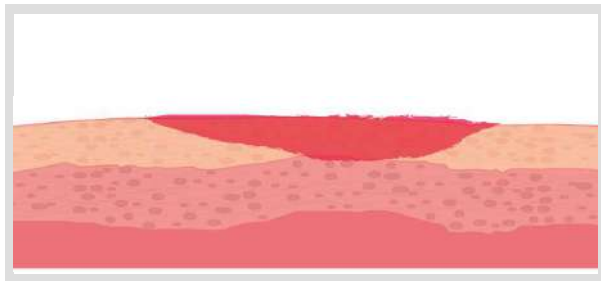
- It is a medicinal specialty presented in cream for the healing of skin lesions, which stimulates the generation of cells in the granular tissue in lesions up to 5 mm deep, which shows the recovery of the lesions in 90% of the cases.
- It contains IPA Derminoxina (500 mg / ml) a mixture of natural fatty acids and vitamins. The 7% zinc oxide, 2% boric acid and 2% lidocaine.

## Derminoxina

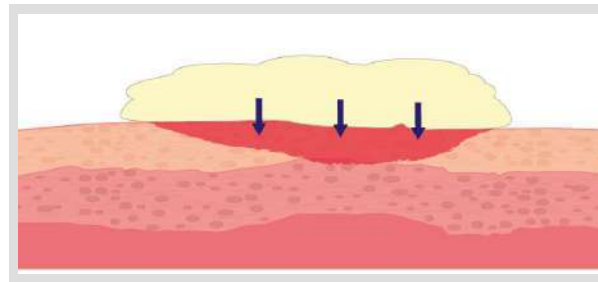
- It is an active pharmaceutical ingredient that stimulates the healing of dermis, epidermis and lesions that do not exceed 5 mm deep.
- With the addition of zinc, boric acid and lidocaine in its right balance, it achieves a safe and effective closure of the lesion at an accelerated time.
- The use of this active pharmaceutical ingredient provides an epithelial nutritive cream composition for application in nutrition, elastization and skin texturing.



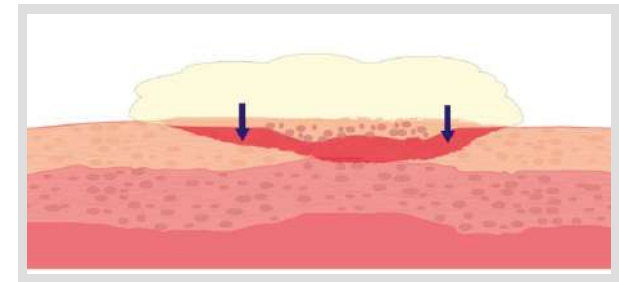
## Mechanism of action



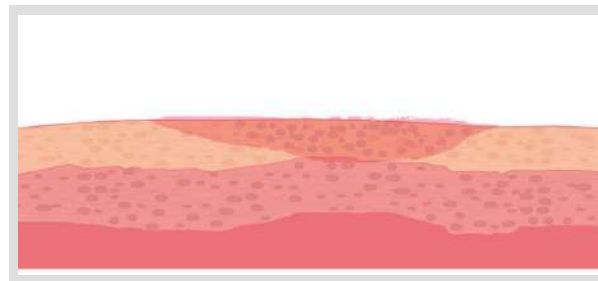
1- Five mm deep lesion without necrosis



2- Closax Regen is applied over the lesion and it begins to penetrate the damaged skin layers.



3- The fatty acid composition generates a mass gradient towards the epithelial cells.



4- The epithelial cells absorb the fatty acids as raw material for their reproduction at a very high speed, generating tissue, dermis and epidermis.

## Comparison with other treatments:

- Closax Regen is better than existing treatments, which have several drawbacks:

<b>(Dressings (any type</b>	<b>Silver sulfadiazine</b>	<b>Others (plasma rich in platelets, vacuum pump, etc.)</b>
<p>Dressings are not practical in interdigital folds, and irregular lesions of large extensions.</p> <p>Needs more time</p> <p>It needs a lot of attention.</p> <p>Expensive.</p>	<p>Slow healing</p> <p>It forms a black colored eschar type of film.</p> <p>Prolonged treatment for 15 to 20 days.</p>	<p>It takes a lot of time.</p> <p>Very expensive.</p>

Treatment in different injuries



**closax**<sup>®</sup>  
REGEN



**Rimal Egypt**

A 68-year-old patient with a 4-year history. Previous treatment with Iruxol.



Before



After 1 Day



Afrter 3 day



After 7 Day

After one week the lesion improved markedly.

Patient of 65 years of age with ulcer of 2 years of evolution in right leg. Previous treatment with Iruxol and Platsul.



Before



Starting treatment



Mid of treatment



End of treatment

Patient of 65 years of age with ulcer of 2 years of evolution in right leg. Previous treatment with Iruxol and Platsul.



Before



Starting treatment



Mid of treatment



8 Days  
End of treatment

Diabetic patient of 60 years of age (insulin dependent).  
Lesion with more than 1 year of evolution previously treated  
with Fusarin without obtaining improvements.



Before



After 3 month

Treatment in different types  
of injuriest



**closax**<sup>®</sup>  
NECRO

**closax**<sup>®</sup>  
REGEN



**Rimal Egypt**



Lesion with 10 days of evolution and previous treatment.

Before



After

Dog bite with 10 days of evolution and previous treatment without results.



Evolution with the treatment applying both products.



Case 22: Paciente quiadriplégico con úlcera por decúbito. Norton scale modified: 12.

Before



After

Patient with 2nd degree burn in leg.



Before



During treatment



After 6 days



**closax**<sup>®</sup>  
EPIDERM



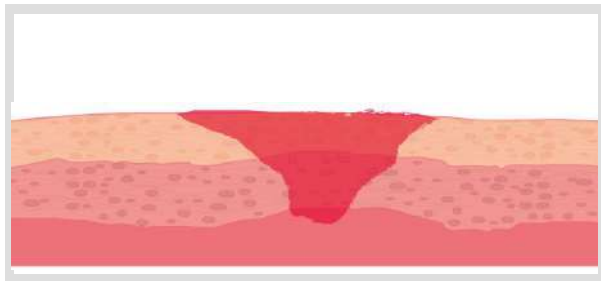
**Rimal Egypt**

## Description

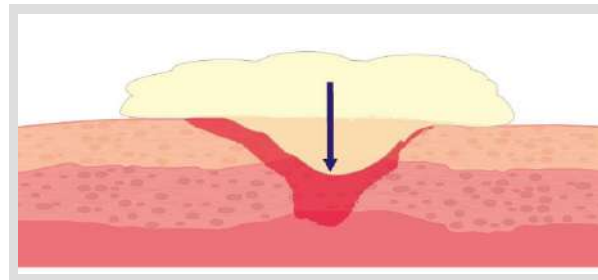
- Accelerated tissue generator.
- It is a skin healing cream, which stimulates the generation of cells in the granular tissue.
- Recommended for lesions more than 5 mm deep of any etiology.
- Contains IPA Derminoxin (600 mg / ml), natural fatty acids and vitamins and contains Eugenol 2% and L Arginine 1%.



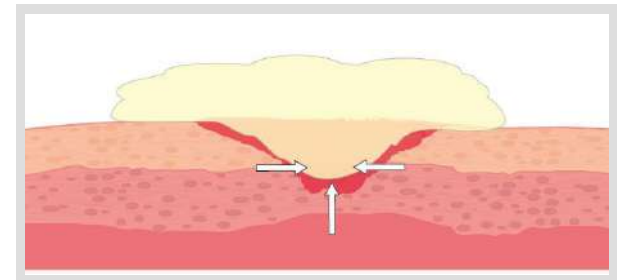
## Mechanism of action



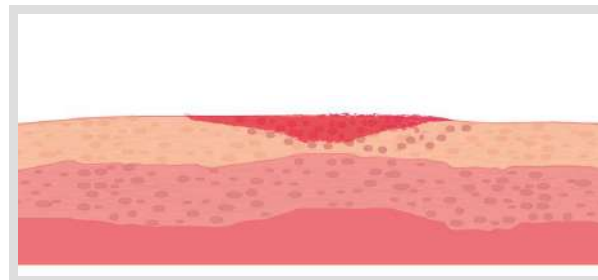
1- Injury more than 5 mm deep



2- Application of Closax Epiderm covering the  
Totality of the lesion (depth)



3- The lesion begins to close (regeneration of  
Epithelial tissue) decreasing its depth and  
width per action of the 500 mg of Derminoxin  
in combination with 1% of L-arginine and 2% of  
Eugenol.



4- The injury has decreased considerably  
depth (less than 5 mm) by the regeneration of Tissue. By decreasing the depth of the injury, CLOSAX REGEN  
can be applied (for injuries of Less than 5mm deep) to accelerate the total healing of the injury.

Treatment in different injuries



**closax**<sup>®</sup>  
EPIDERM



**Rimal Egypt**



Dog bite. 1 week of evolution.



Before



24 hs



4 Days

Dog bite. 10 days of evolution Previous treatments without results.



Before



After

Patients of 56 years of age, with a 5-mm of deep post-traumatic ulcer.



Before



After



**closax<sup>®</sup>**  
PEELING



**Rimal Egypt**

## Description

- Its a cosmetic cream or gel for ENZYMATIC PEELING.
- CLOSAX PEELING will grant cellular renewal, firmness, and skin luminosity.
- The active substance of CLOSAX PEELING is papain, which is bioencapsulated with the exclusive and patented EBE Technology. Papain has regenerative, antibacterial and anti-inflammatory properties.

## Ingredients:

- Water, propylene glycol, pectin, triethanolamine, papain, dmdm hydantoin, polysorbate 20, fragrance.

## Instructions for use:

- Apply to the area to be treated, leave on for a few minutes and remove with a wet vegetable sponge.
- A feeling of deep and fresh cleansing will be felt by the action of enzymatic cleansing of dead skin cells. Obtaining a cellular renewal, increase of the firmness and luminosity of the skin

**Thank You very much  
for your attention**



**Thank You**



**Rimal Egypt**